

1BHK UNITS (35 SQ.MT CARPET)

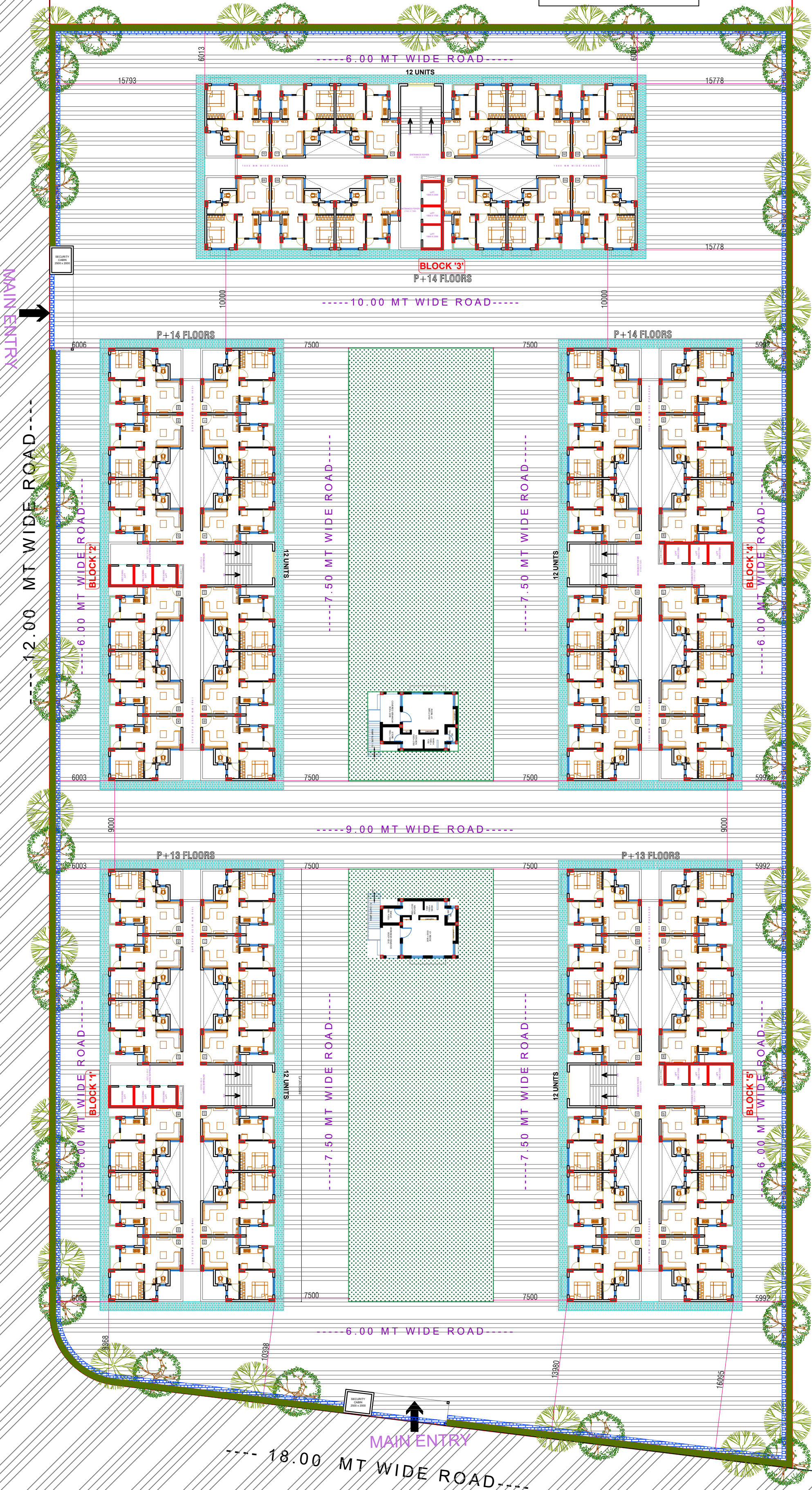
SITE PLAN TYPICAL FLOOR PLAN
(1ST TO 13TH FLOOR)

DIVYESH DESAI & ASSOCIATES
ARCHITECTS/ENGINEERS/INTERIOR DESIGNERS
811 - 814 SHIKOMAR, Opp Ocean Park,
Shilpi Road, Ahmedabad - 380 015, India
E-Mail : divyeshdesai@proton.com Web Site : www.ddivyesh.com

building height 45 mts (p +13 & p + 14 floor)

TPS 64 FP 131(E.W.S.H.	
	SQ.MT.
PLOT AREA (AS PER DWG = 10735.00)	11166.00
REQUIRED C.P. AREA @ 10%	1116.60
PROVIDED C.P. AREA	1298.00
PERMISSIBLE FSI (3)	33498.00
PROPOSED FSI (2.99)	33412.52
UNIT AREA : CARPET AREA = 35.00 SQ.MT.&B-UP AREA 40.52 SQ.MT.	

NO OF UNITS PER FLOOR = 60
NO. OF UNITS IN 13 FLOORS (2 blocks) =
12units x 2 blocks x 13floors = 312 UNITS
NO. OF UNITS IN 14 FLOORS (3 blocks) =
12units x 3 blocks x 14 floors = 504 UNITS
TOTAL NO UNITS = 816 UNITS
FSI AREA OF ONE UNIT = 489.89
FSI AREA OF 2 BLOCKS WITH 13 FLOORS =
13 X 2 X 489.89 = 12737.14
FSI AREA OF 3 BLOCKS WITH 14 FLOORS =
14 X 3 X 489.89 = 20575.38
TOTAL FSI AREA = 33312.52
AANGANWADI AREA = 50 X 2 = 100



PROPOSED EWS RESIDENTIAL SCHEME FOR AMC

@ TRAGAD, TPS 64 - FP NO. 131 , Ahmedabad



07-JULY-2025

1BHK UNITS (35 SQ.MT CARPET)

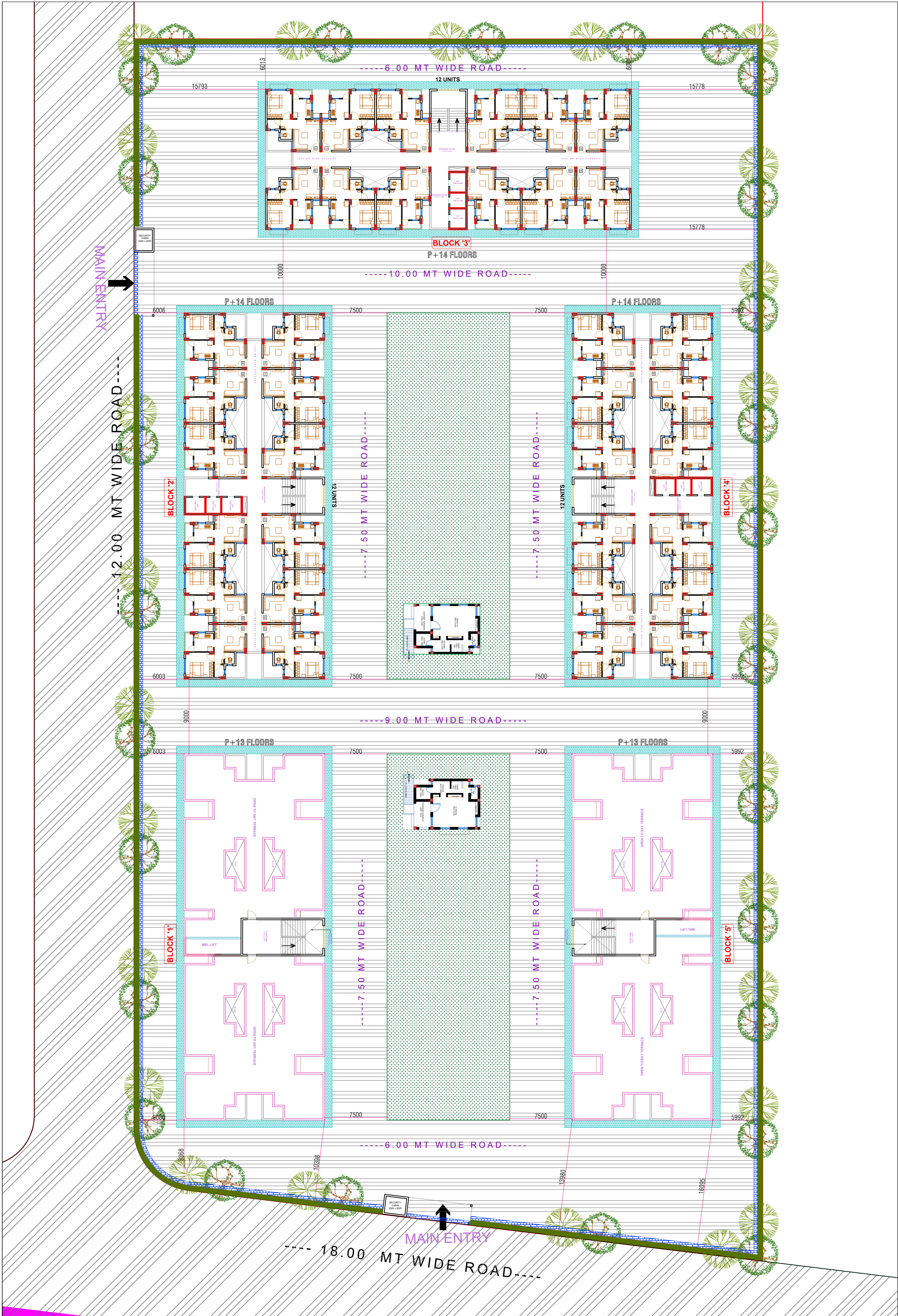
SITE PLAN 14TH FLOOR PLAN

DIVYESH DESAI & ASSOCIATES
ARCHITECTS/ENGINEERS/INTERIOR DESIGNERS
811 - 814 SHIKOMAR, Opp Ocean Park,
Shilpa Road, Ahmedabad - 380 015 India
Phone : 9825242152
E-Mail : divyeshdesai@proton.com Web Site : www.ddivyesh.com

07-JULY-2025

PROPOSED EWS RESIDENTIAL SCHEME FOR AMC

@ TRAGAD, TPS 64 - FP NO. 131 , Ahmedabad



1BHK UNITS (35 SQ.MT CARPET)

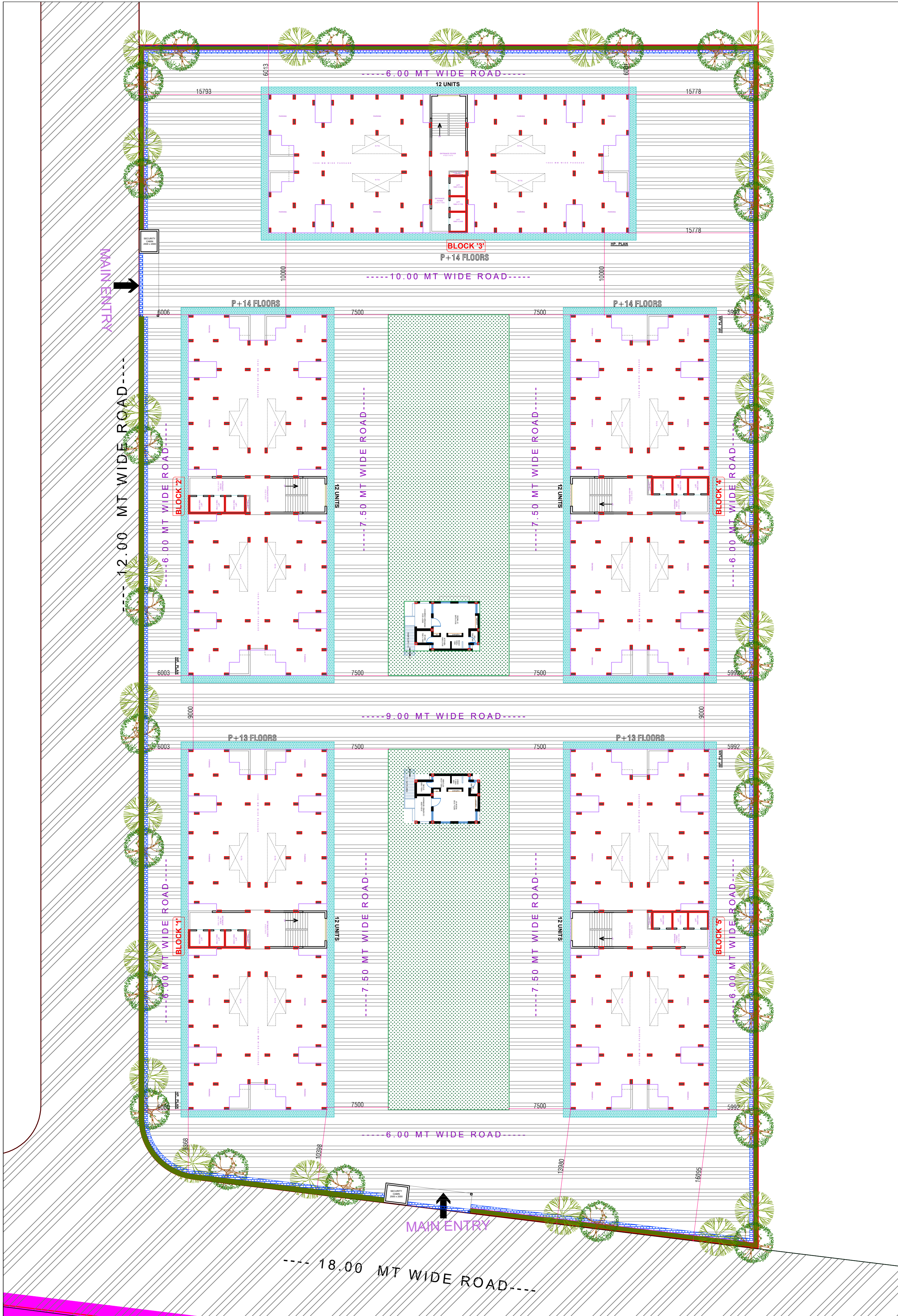
HOLLOW PLINTH PLAN

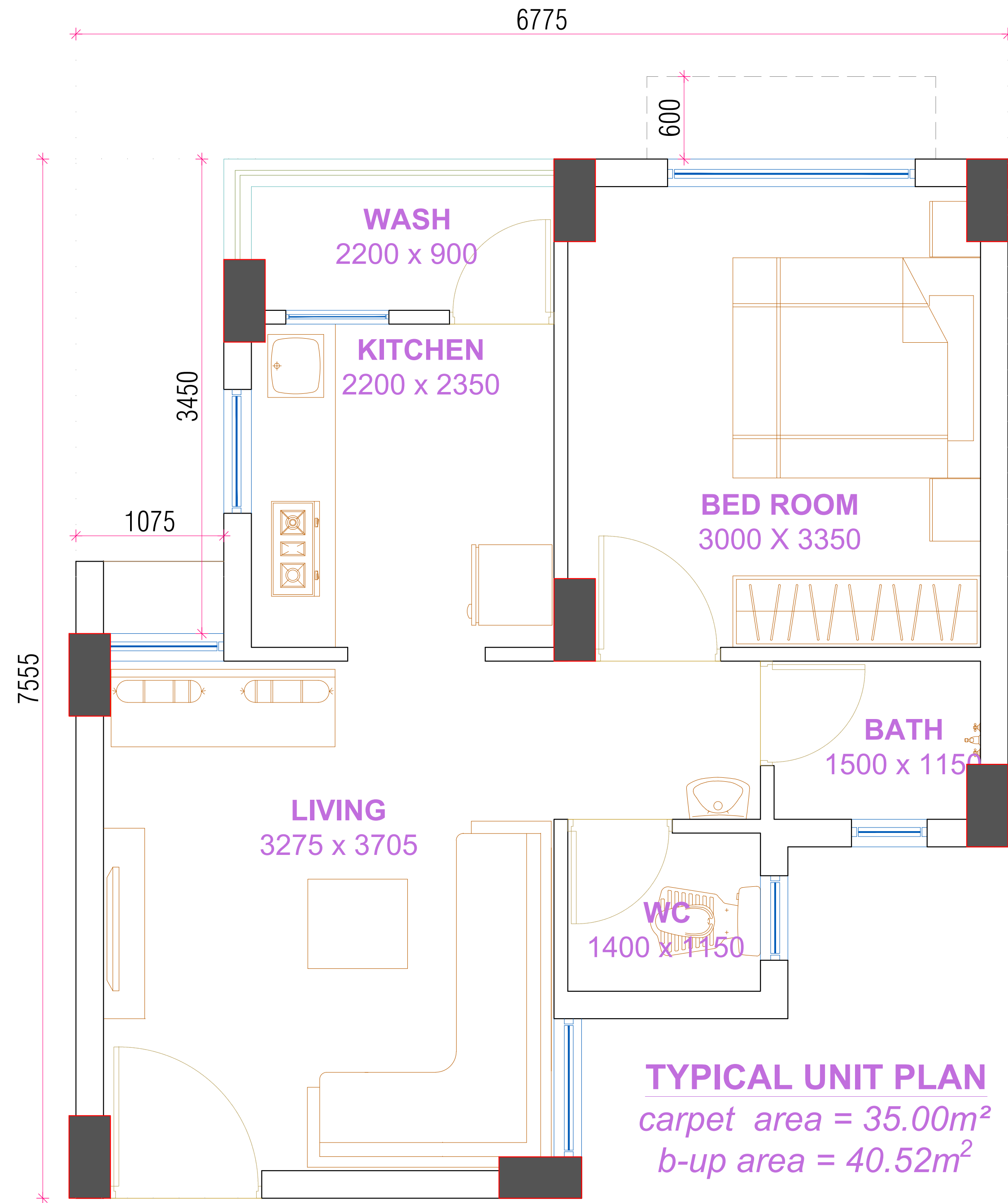
DIVYESH DESAI & ASSOCIATES
ARCHITECTS|ENGINEERS|INTERIOR DESIGNERS
811 - 814 SHIKOMAR, Opp Ocean Park,
Shilpi Road, Ahmedabad - 380 015, India
E-Mail : divyeshdesai@divyesh.com Web Site : www.divyesh.com

07-JULY-2025

PROPOSED EWS RESIDENTIAL SCHEME FOR AMC

@ TRAGAD, TPS 64 - FP NO. 131 , Ahmedabad





1BHK UNITS (35 SQ.MT CARPET)

UNIT PLAN

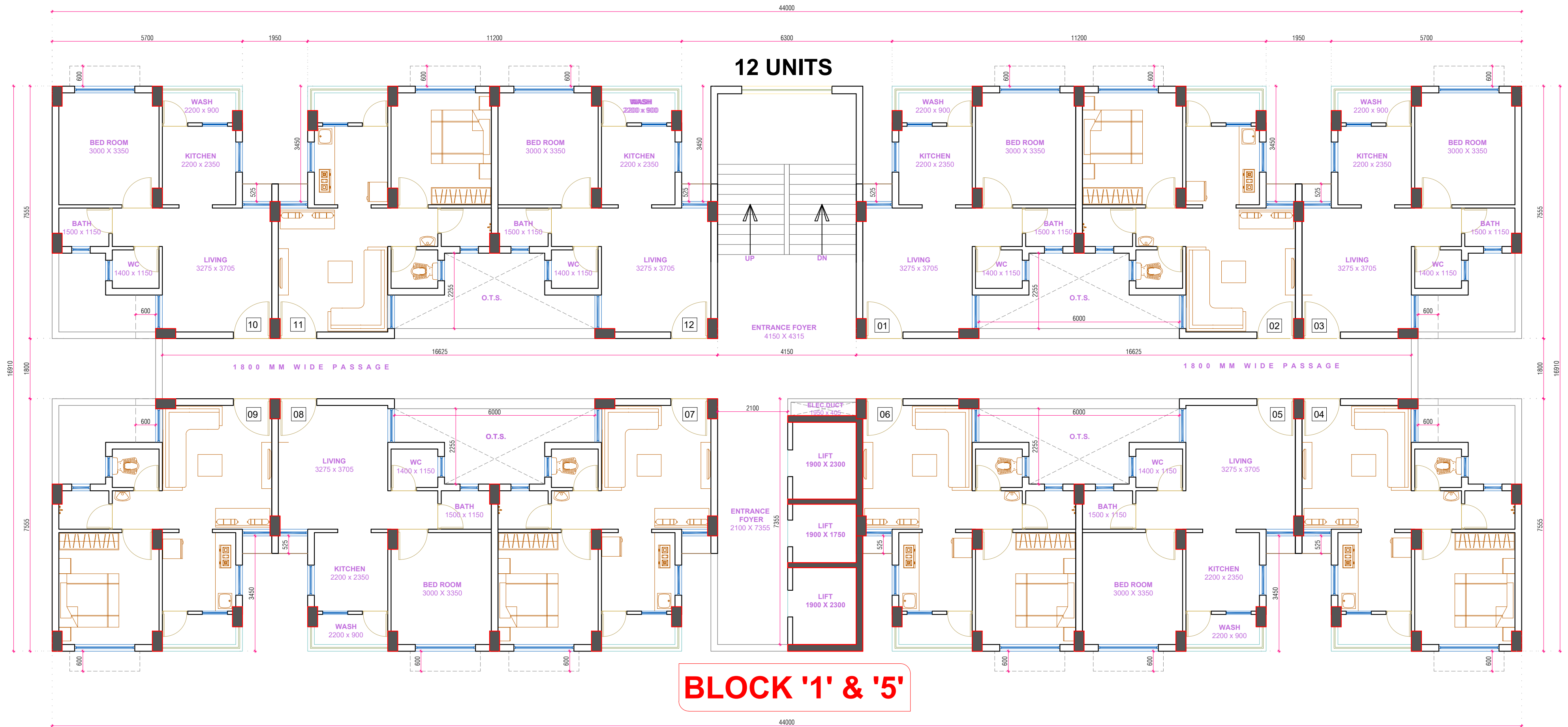
DIVYESH DESAI & ASSOCIATES
ARCHITECTS | ENGINEERS | INTERIOR DESIGNERS
811 - 814 "SHIROMANI", Opp Ocean Park,
Satellite Road, Ahmedabad - 380 015, India
Phone No : +9179-26762251 , +9179-26761535
E-Mail : divyeshdesaiarch@yahoo.com Web Site : www.ddarchitect.com



PROPOSED EWS RESIDENTIAL SCHEME FOR AMC

@ TRAGAD, TPS 64 - FP NO. 131 , Ahmedabad

07-JULY-2025

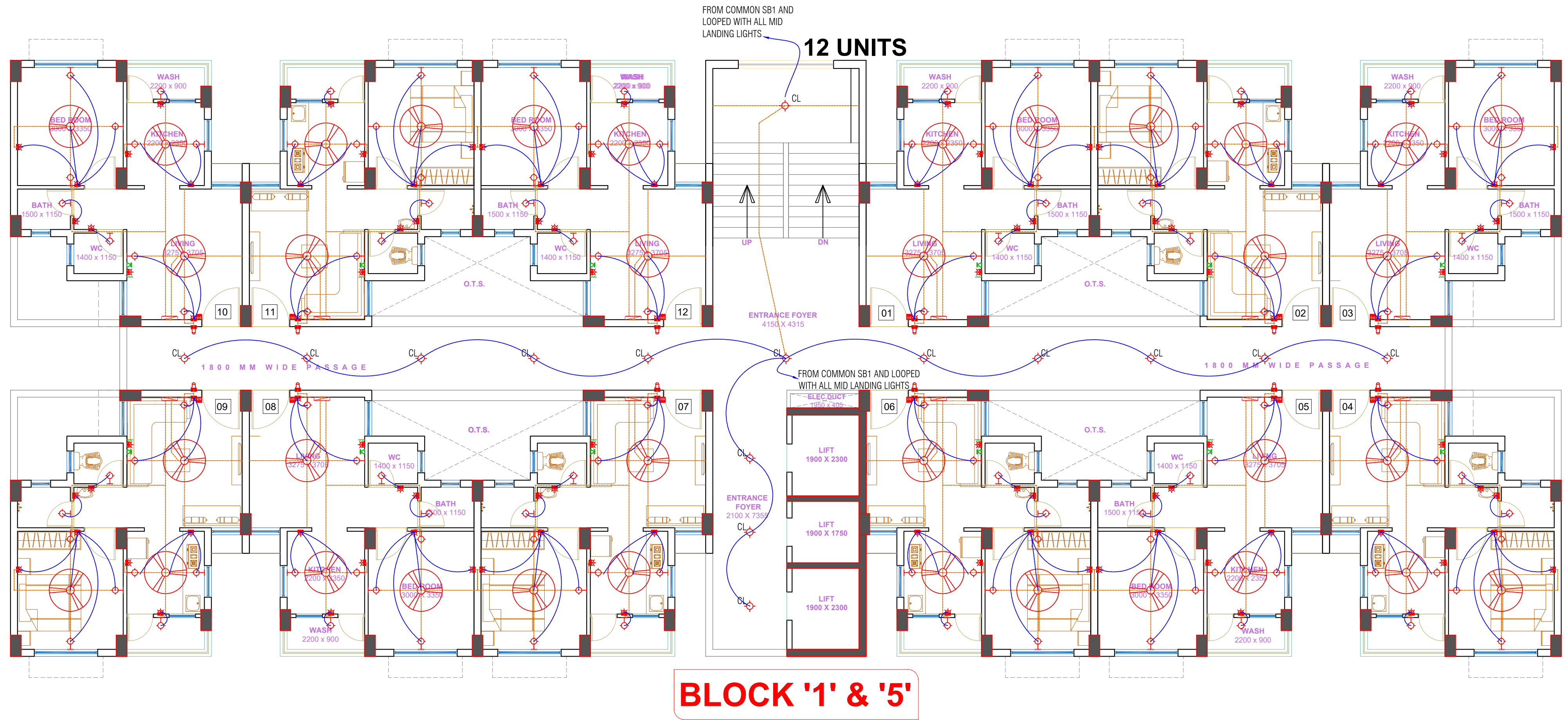


1BHK UNITS (35 SQ.MT CARPET)

BLOCK '1' & '5'

TYPICAL FLOOR PLAN

DIVYESH DESAI & ASSOCIATES
ARCHITECTS | ENGINEERS | INTERIOR DESIGNERS
811 - 814 "SHIROMANI", Opp Ocean Park,
Satellite Road, Ahmedabad - 380 015, India
Phone No : +9179-26762251 , +9179-26761535
E-Mail : divyeshdesaiarch@yahoo.com Web Site : www.ddarchitect.com



1BHK UNITS (35 SQ.MT CARPET)

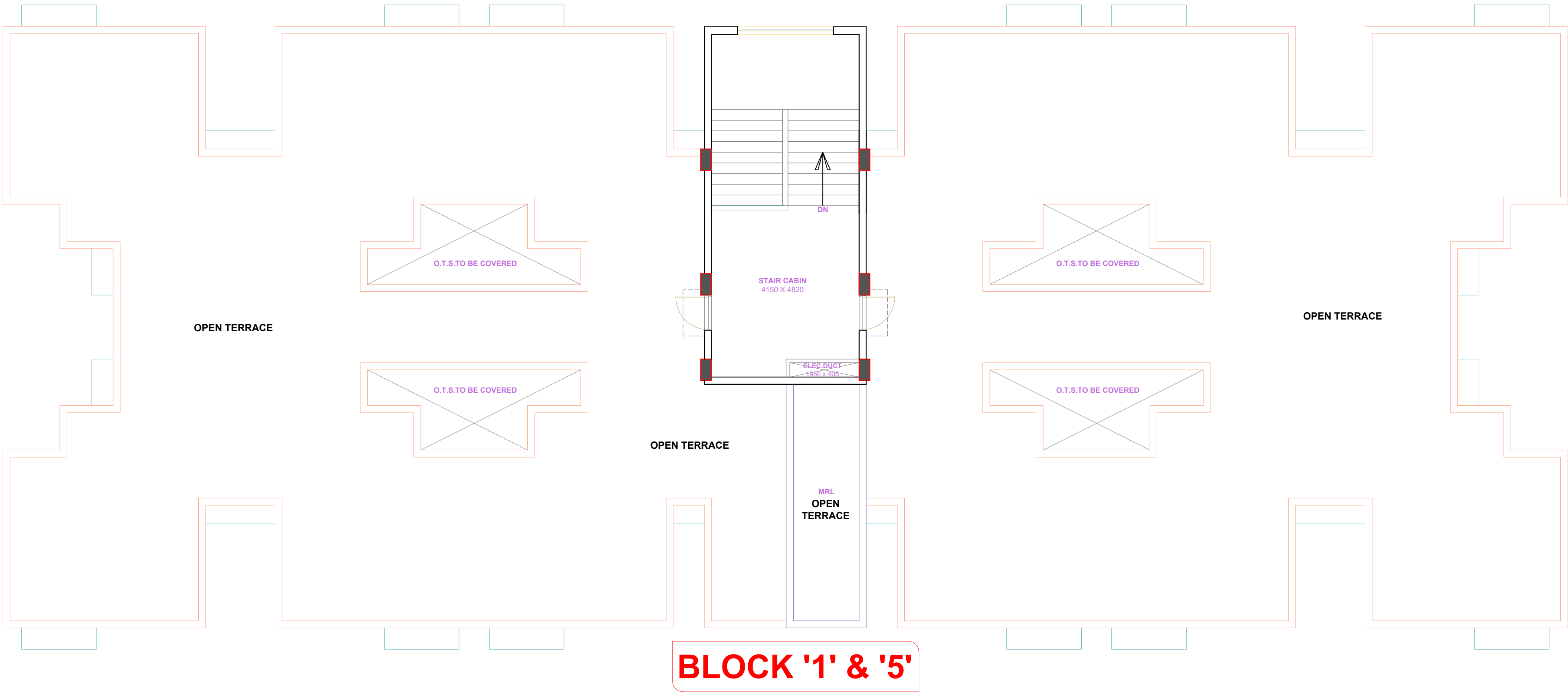
BLOCK '1' & '5'

TYPICAL FLOOR ELECTRICAL PLAN



PROPOSED EWS RESIDENTIAL SCHEME FOR AMC
@ TRAGAD, TPS 64 - FP NO. 131 , Ahmedabad

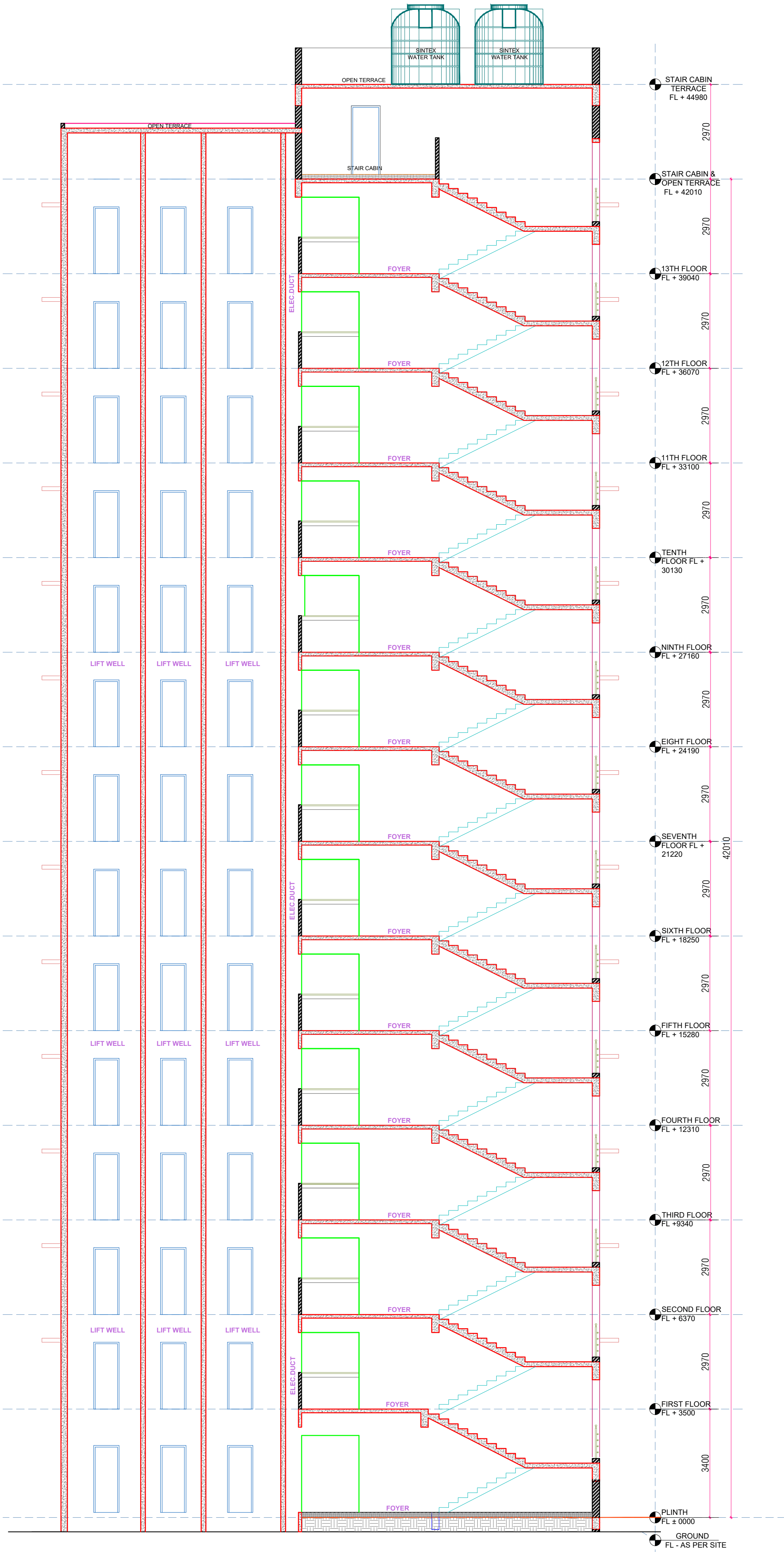
07-JULY-2025



1BHK UNITS (35 SQ.MT CARPET)

BLOCK '1' & '5'

SCHEMATIC SECTION



BLOCK '2','3' & '4'

SCHEMATIC SECTION

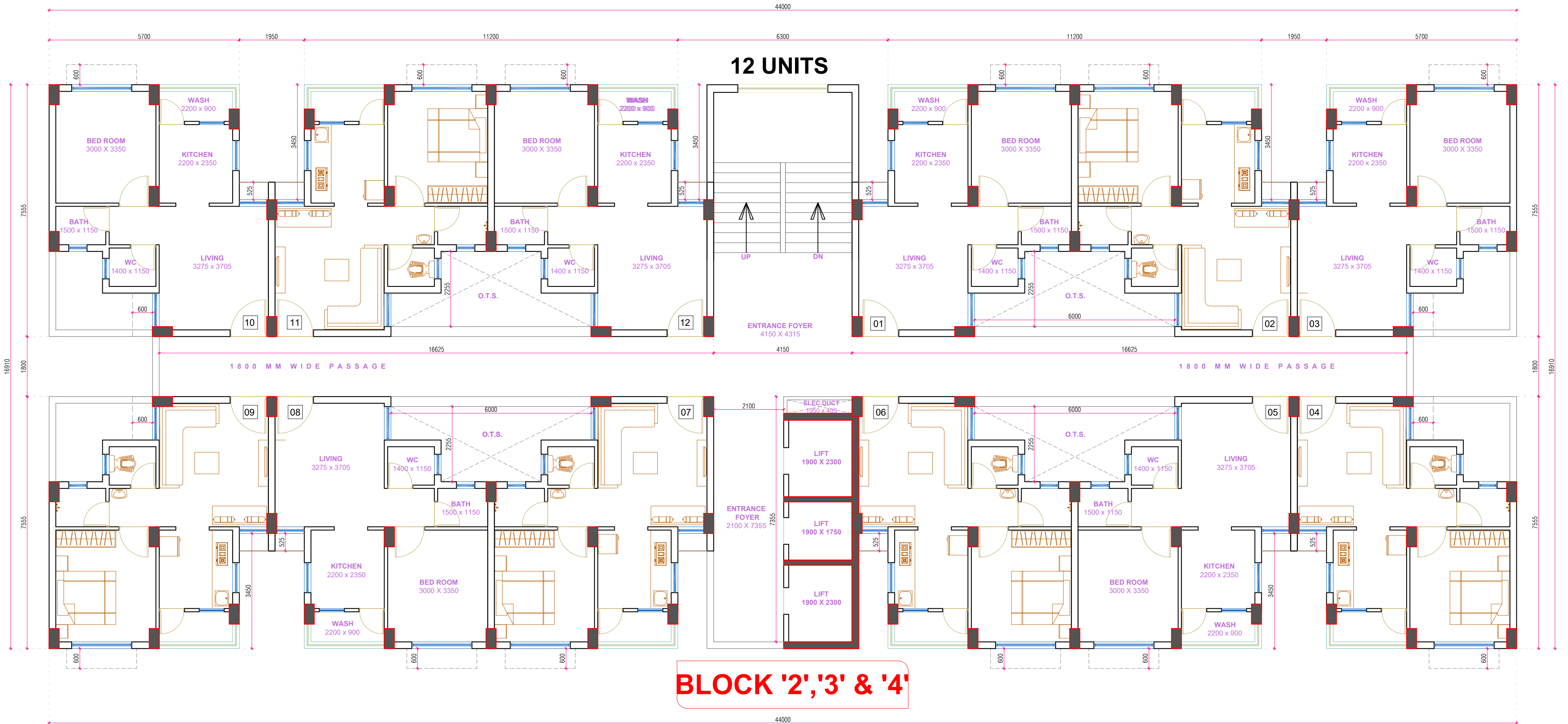
DIVYESH DESAI & ASSOCIATES
ARCHITECTS | ENGINEERS | INTERIOR DESIGNERS
811 - 814 SHIKOMAR, Opp Ocean Park,
Shilpa Road, Ahmedabad - 380 015, India
E-Mail : divyeshdesai@divy.com Web Site : www.divyesh.com

07-JULY-2025

PROPOSED EWS RESIDENTIAL SCHEME FOR AMC

@ TRAGAD, TPS 64 - FP NO. 131 , Ahmedabad





1BHK UNITS (35 SQ.MT CARPET)

BLOCK '2', '3' & '4'

TYPICAL FLOOR PLAN

DIVYESH DESAI & ASSOCIATES
ARCHITECTS | ENGINEERS | INTERIOR DESIGNERS
811 - 814 "SHIROMANI", Opp Ocean Park,
Satellite Road, Ahmedabad - 380 015, India
Phone No : +9179-26762251 , +9179-26761535
E-Mail : divyeshdesaiarch@yahoo.com Web Site : www.ddarchitect.com



PROPOSED EWS RESIDENTIAL SCHEME FOR AMC
@ TRAGAD, TPS 64 - FP NO. 131 , Ahmedabad

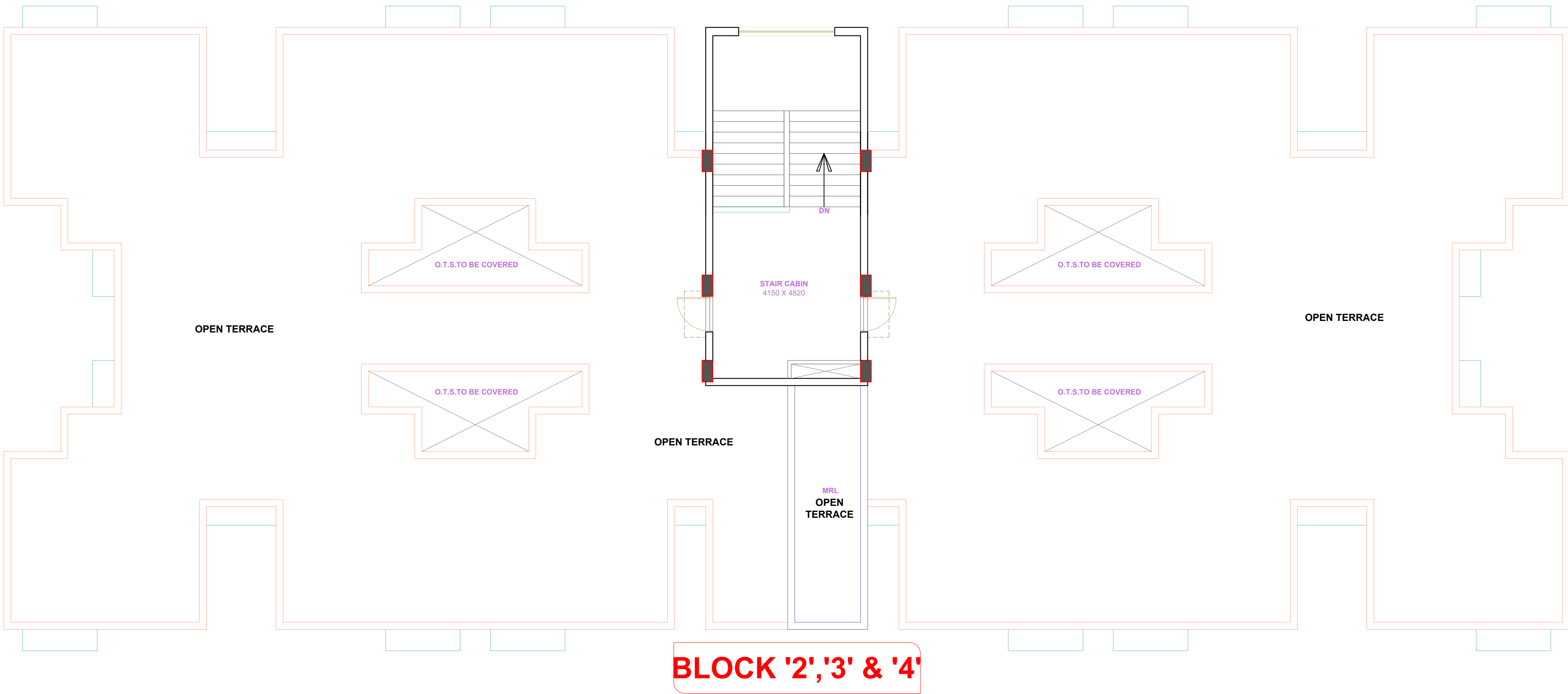
07-JULY-2025

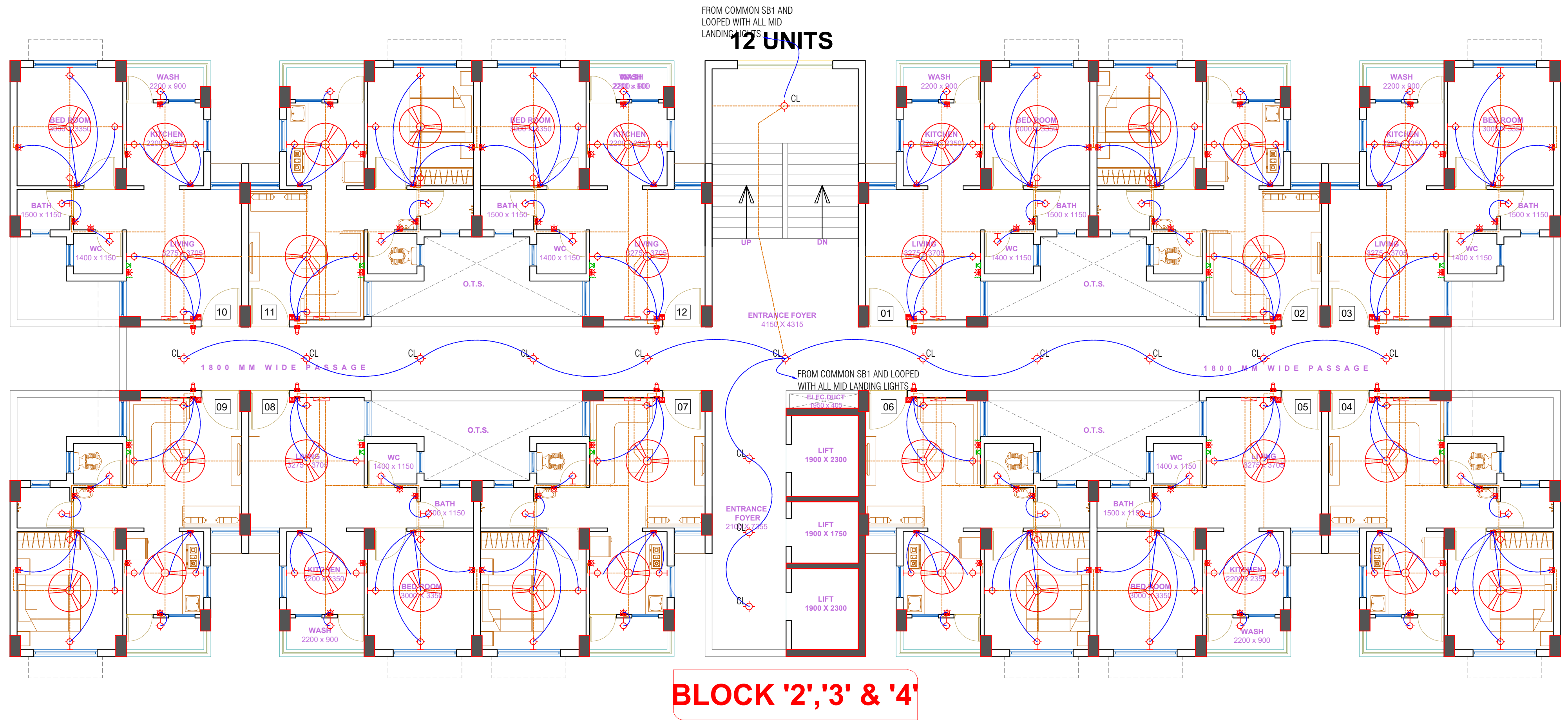
1BHK UNITS (35 SQ.MT CARPET)

BLOCK '2', '3' & '4'

ROOF TOP SOLAR LOCATION PLAN

DIVYESH DESAI & ASSOCIATES
ARCHITECTS | ENGINEERS | INTERIOR DESIGNERS
811 - 814 "SHIROMANI", Opp Ocean Park,
Satellite Road, Ahmedabad - 380 015, India
Phone No : +9179-26762251 , +9179-26761535
E-Mail : divyeshdesaiarch@yahoo.com Web Site : www.ddarchitect.com





1BHK UNITS (35 SQ.MT CARPET)

BLOCK '2', '3' & '4'

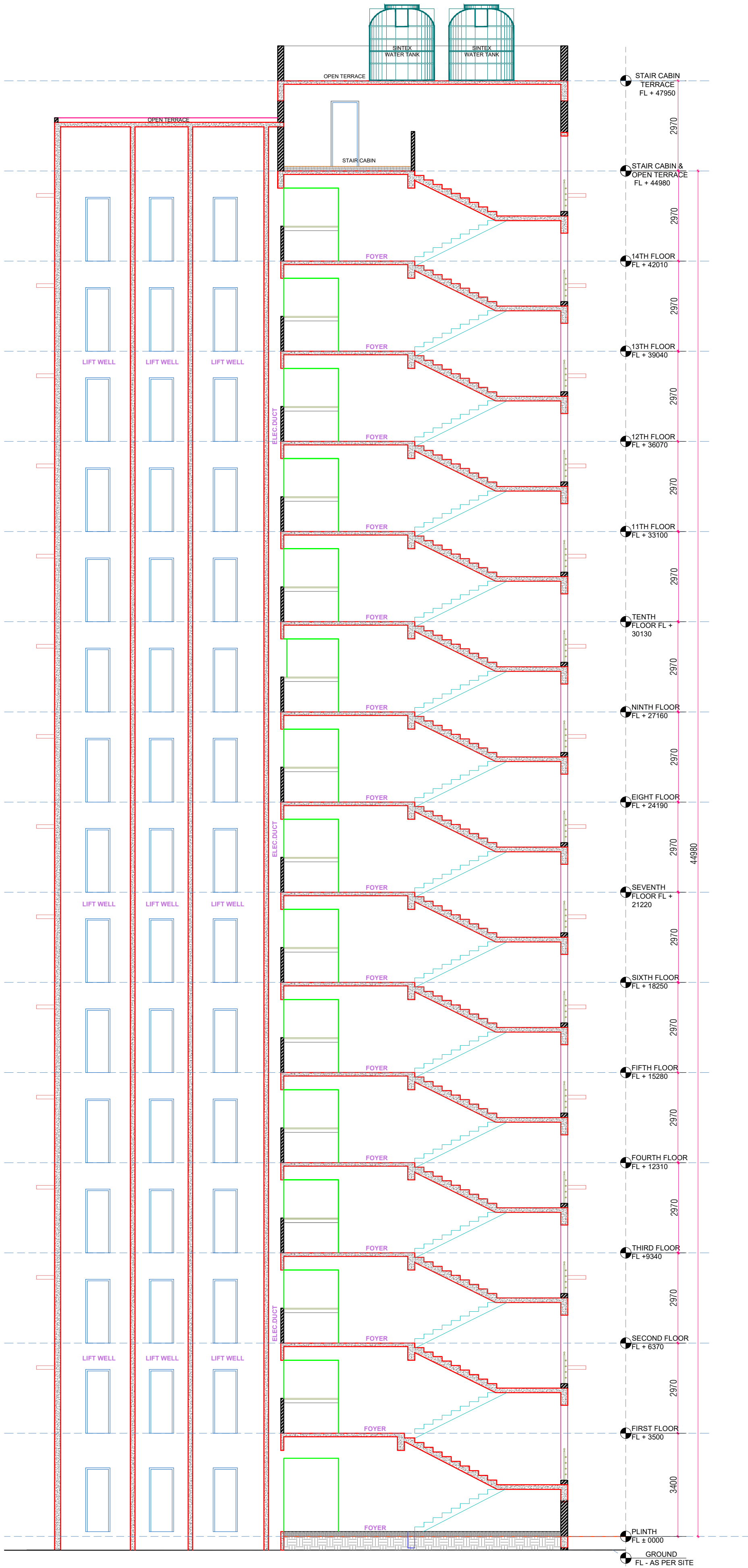
TYPICAL FLOOR ELECTRICAL PLAN

1BHK UNITS (35 SQ.MT CARPET)

BLOCK '2', '3' & '4'

SCHEMATIC SECTION

DIVYESH DESAI & ASSOCIATES
ARCHITECTS | ENGINEERS | INTERIOR DESIGNERS
811 - 814 SHIKOMAR, Opp Ocean Park,
Shilpi Road, Ahmedabad - 380 015, India
E-Mail : divyeshdesai@divy.com Web Site : www.divyesh.com



BLOCK '2','3' & '4'

SCHEMATIC SECTION

PROPOSED EWS RESIDENTIAL SCHEME FOR AMC

@ TRAGAD, TPS 64 - FP NO. 131 , Ahmedabad

07-JULY-2025

